

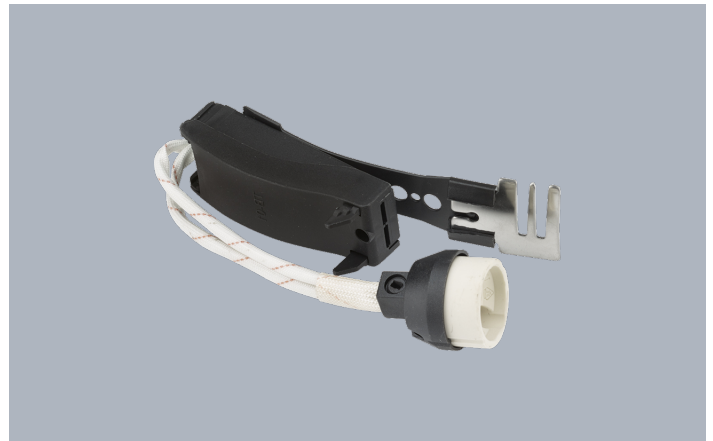
LUMINAIRES ACCESSOIRES - ACCESSOIRES POUR ENCASTRÉS

DA-900E

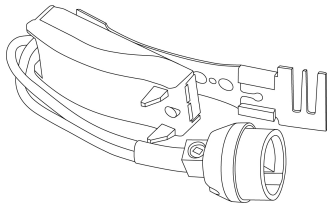
Product Description:

Kit de douille prt l'emploi. Idéal pour remplacement et équipement de luminaires existants.

Product Image:



Line Drawing



Product Specs:

Input Voltage	240~240V	Dimmable	Non
Lamp Base	GU10	Length (mm)	220
Weight (Kg)	0.054	Positional Adjustment	Fixe

SKU Table and Ordering:

SKU Code	Finish Colour
DA-900E	Blanc

Compliance & Approvals:



Warranty:

This product has a guarantee period of . Warranties may be available on certain products as indicated in the product description. Warranties are valid from the date of purchase. The warranty is invalid in the case of improper use, installation, tampering, removal of the Q.C. date label or installation in an improper working environment or installation. Should this product fail during the warranty period it will be replaced free of charge, subject to the correct installation of the original product and subsequent return of the faulty unit. Aurora does not accept responsibility for any installation costs associated with the replacement of this product and Aurora reserves the right to alter specifications without prior notice.

UK Head Office

Apex Park
6 Little Burrow
Welwyn Garden City AL7 4SW
United Kingdom
Tel : +44 (0) 1727 83 66 11